



2534 DRC Lighting Specifications

Rev. 2019

PROJECT NAME

**25
34**

DATE:
January 2019



Parking Lot Fixture Example

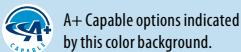
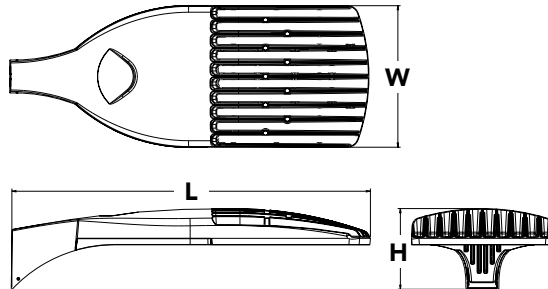


D-Series Size 1 LED Area Luminaire



Specifications

EPA:	1.01 ft ² (0.09 m ²)
Length:	33" (83.8 cm)
Width:	13" (33.0 cm)
Height:	7-1/2" (19.0 cm)
Weight (max):	27 lbs (12.2 kg)



Optics, Distribution, Voltage, and any options to be determined by Lighting Designer

Catalog Number
Notes
Type

Hit the Tab key or mouse over the page to see all interactive elements.

A+ Capable Luminaire

This item is an A+ capable luminaire, which has been designed and tested to provide consistent color appearance and system-level interoperability.

- All configurations of this luminaire meet the Acuity Brands' specification for chromatic consistency
- This luminaire is A+ Certified when ordered with DTL® controls marked by a **shaded background**. DTL DLL equipped luminaires meet the A+ specification for luminaire to photocontrol interoperability¹
- This luminaire is part of an A+ Certified solution for ROAM® or XPoint™ Wireless control networks, providing out-of-the-box control compatibility with simple commissioning, when ordered with drivers and control options marked by a **shaded background**¹

To learn more about A+, visit www.acuitybrands.com/aplus.

- See ordering tree for details.
- A+ Certified Solutions for ROAM require the order of one ROAM node per luminaire. Sold Separately: [Link to Roam](#); [Link to DTL DLL](#)

Ordering Information

EXAMPLE:

Series	LEDs	Color temperature	Distribution	Voltage	Mounting
DSX1 LED	Forward optics P1 P4 P7 P2 P5 P8 P3 P6 P9 Rotated optics P10 ¹ P12 ¹ P11 ¹ P13 ¹	30K 3000 K 40K 4000 K 50K 5000 K AMBPC Amber phosphor converted ²	T1S Type I short T2S Type II short T2M Type II medium T3S Type III short T3M Type III medium T4M Type IV medium TFTM Forward throw medium T5VS Type V very short T5S Type V short T5M Type V medium T5W Type V wide BLC Backlight control ^{2,3} LCCO Left corner cutoff ^{2,3} RCCO Right corner cutoff ^{2,3}	MVOLT ^{4,5} 120 ⁶ 208 ^{5,6} 240 ^{5,6} 277 ⁶ 347 ^{5,6,7} 480 ^{5,6,7}	Shipped included SPA Square pole mounting RPA Round pole mounting WBA Wall bracket SPUMBA Square pole universal mounting adaptor ⁸ RPUMBA Round pole universal mounting adaptor ⁸ Shipped separately KMA8 DDBXD U Mast arm mounting bracket adaptor (specify finish) ⁹

Control options	Other options	Finish (required)
Shipped installed NLTAIR2 nLight AIR generation 2 enabled ¹⁰ PER NEMA twist-lock receptacle only (controls ordered separate) ¹¹ PER5 Five-wire receptacle only (controls ordered separate) ^{11,12} PER7 Seven-wire receptacle only (controls ordered separate) ^{11,12} DMG 0-10V dimming extend out back of housing for external control (leads exit fixture) DS Dual switching ^{13,14} PIR Bi-level, motion/ambient sensor, 8-15' mounting height, ambient sensor enabled at 5fc ^{5,15,16} PIRH Bi-level, motion/ambient sensor, 15-30' mounting height, ambient sensor enabled at 5fc ^{5,15,16} PIRHN Network, Bi-Level motion/ambient sensor ¹⁷ PIR1FC3V Bi-level, motion/ambient sensor, 8-15' mounting height, ambient sensor enabled at 1fc ^{5,15,16}	PIRH1FC3V Bi-level, motion/ambient sensor, 15-30' mounting height, ambient sensor enabled at 1fc ^{5,15,16} BL30 Bi-level switched dimming, 30% ^{5,14,18} BL50 Bi-level switched dimming, 50% ^{5,14,18} PNMTDD3 Part night, dim till dawn ^{5,19} PNMT5D3 Part night, dim 5 hrs ^{5,19} PNMT6D3 Part night, dim 6 hrs ^{5,19} PNMT7D3 Part night, dim 7 hrs ^{5,19} FAO Field adjustable output ²⁰	Shipped installed HS House-side shield ²¹ SF Single fuse (120, 277, 347V) ⁶ DF Double fuse (208, 240, 480V) ⁶ L90 Left rotated optics ¹ R90 Right rotated optics ¹ Shipped separately BS Bird spikes ²² EGS External glare shield ²²
		DDBXD Dark bronze DBLXD Black DNAXD Natural aluminum DWHXD White DDBTXD Textured dark bronze DBLBXD Textured black DNATXD Textured natural aluminum DWHGXD Textured white



Ordering Information

Accessories

Ordered and shipped separately.

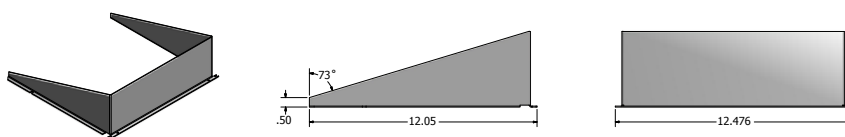
DLL127F 1.5 JU	Photocell - SSL twist-lock (120-277V) ²³
DLL347F 1.5 CUL JU	Photocell - SSL twist-lock (347V) ²³
DLL480F 1.5 CUL JU	Photocell - SSL twist-lock (480V) ²³
DSHORT SBK U	Shorting cap ²³
DSX1HS 30C U	House-side shield for 30 LED unit ²¹
DSX1HS 40C U	House-side shield for 40 LED unit ²¹
DSX1HS 60C U	House-side shield for 60 LED unit ²¹
PUMBA DDBXD U*	Square and round pole universal mounting bracket (specify finish) ²⁴
KMA8 DDBXD U	Mast arm mounting bracket adaptor (specify finish) ⁴

For more control options, visit [DTL](#) and [ROAM](#) online.

NOTES

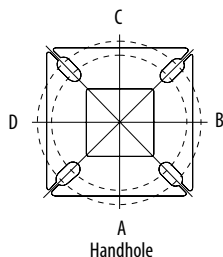
- 1 P10, P11, P12 or P13 and rotated optics (L90, R90) only available together.
- 2 AMBPC is not available with BLC, LCCO, RCCO or P4, P7, P8, P9 or P13.
- 3 Not available with HS.
- 4 MVOLT driver operates on any line voltage from 120-277V (50/60 Hz).
- 5 Any PIRx with BL30, BL50 or PNMT, is not available with 208V, 240V, 347V, 480V or MVOLT. It is only available in 120V or 277V specified.
- 6 Single fuse (SF) requires 120V, 277V or 347V. Double fuse (DF) requires 208V, 240V or 480V.
- 7 Not available in P1 or P10. Not available with BL30, BL50 or PNMT options.
- 8 Existing drilled pole only. Available as a separate combination accessory; for retrofit use only: PUMBA (finish) U; 1.5 G vibration load rating per ANCI C136.31.
- 9 Must order fixture with SPA option. Must be ordered as a separate accessory; see Accessories information. For use with 2-3/8" mast arm (not included).
- 10 Must be ordered with PIRHN.
- 11 Photocell ordered and shipped as a separate line item from Acuity Brands Controls. See accessories. Not available with DS option. Shorting cap included.
- 12 If ROAM[®] node required, it must be ordered and shipped as a separate line item from Acuity Brands Controls. Not available with DCR. Node with integral dimming. Shorting cap included.
- 13 Provides 50/50 fixture operation via (2) independent drivers. Not available with PER, PER5, PER7, PIR or PIRH. Not available P1, P2, P3, P4 or P5.
- 14 Requires (2) separately switched circuits.
- 15 Reference Motion Sensor table on page 3.
- 16 Reference PER table on page 3 to see functionality.
- 17 Must be ordered with NLTAIR2. For more information on nLight Air 2 visit [this link](#).
- 18 Not available with 347V, 480V, PNMT, DS. For PER5 or PER7, see PER Table on page 3. Requires isolated neutral.
- 19 Not available with 347V, 480V, DS, BL30, BL50. For PER5 or PER7, see PER Table on page 3. Separate Dusk to Dawn required.
- 20 Not available with other dimming controls options.
- 21 Not available with BLC, LCCO and RCCO distribution. Also available as a separate accessory; see Accessories information.
- 22 Must be ordered with fixture for factory pre-drilling.
- 23 Requires luminaire to be specified with PER, PER5 or PER7 option. See PER Table on page 3.
- 24 For retrofit use only.

External Glare Shield



Drilling

HANDHOLE ORIENTATION



Tenon Mounting Slipfitter**

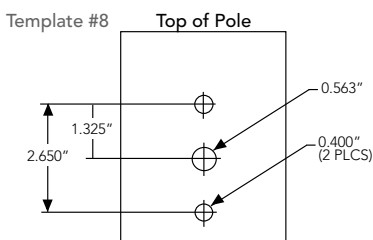
Tenon O.D.	Single Unit	2 at 180°	2 at 90°	3 at 120°	3 at 90°	4 at 90°
2-3/8"	AST20-190	AST20-280	AST20-290	AST20-320	AST20-390	AST20-490
2-7/8"	AST25-190	AST25-280	AST25-290	AST25-320	AST25-390	AST25-490
4"	AST35-190	AST35-280	AST35-290	AST35-320	AST35-390	AST35-490

Pole drilling nomenclature: # of heads at degree from handhole (default side A)					
DM19AS	DM28AS	DM29AS	DM32AS	DM39AS	DM49AS
1 @ 90°	2 @ 280°	2 @ 90°	3 @ 120°	3 @ 90°	4 @ 90°
Side B	Side B & D	Side B & C	Round pole only	Side B, C, & D	Sides A, B, C, D

Note: Review luminaire spec sheet for specific nomenclature

Pole top or tenon O.D.	4.5" @ 90°	4" @ 90°	3.5" @ 90°	3" @ 90°	4.5" @ 120°	4" @ 120°	3.5" @ 120°	3" @ 120°
DSX SPA	Y	Y	Y	N	-	-	-	-
DSX RPA	Y	Y	N	N	Y	Y	Y	Y
DSX SPUMBA	Y	N	N	N	-	-	-	-
DSX RPUMBA	N	N	N	N	Y	Y	Y	N

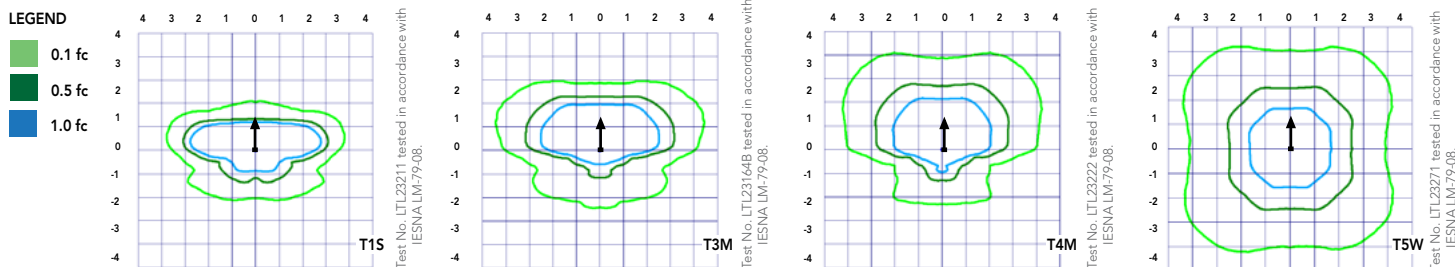
*3 fixtures @120 require round pole top/tenon.



Photometric Diagrams

To see complete photometric reports or download .ies files for this product, visit Lithonia Lighting's [D-Series Area Size 1 homepage](#).

Isofootcandle plots for the DSX1 LED 60C 1000 40K. Distances are in units of mounting height (25').



One Lithonia Way • Conyers, Georgia 30012 • Phone: 800.279.8041 • [www.lithonia.com](#)
© 2011-2018 Acuity Brands Lighting, Inc. All rights reserved.

DSX1-LED
Rev. 07/25/18
Page 2 of 7

Parking Lot Pole Example

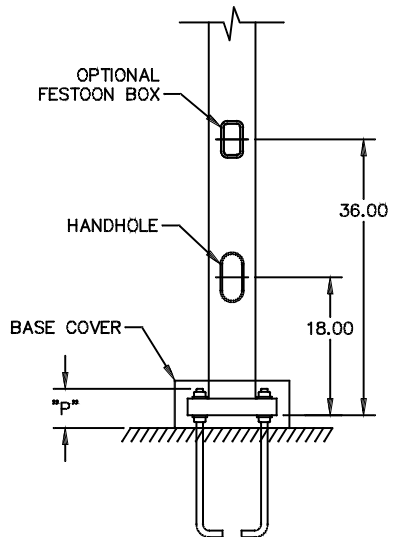
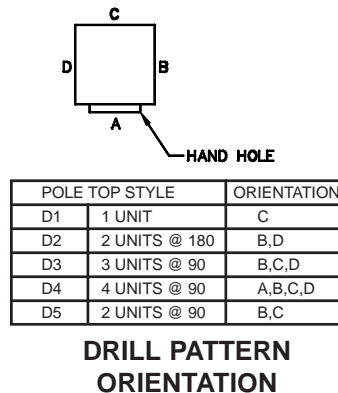
FEATURES & SPECIFICATIONS

CONSTRUCTION - Welds conform to applicable AWS structural welding code. Pole shaft is one piece, low carbon alloy steel per ASTM A595, Grade A or ASTM A500, Grade C with 50,000-PSI minimum yield strength. Pole base shall be per ASTM A36 and shall telescope pole shaft and be circumferentially welded top and bottom. Hand hole is 2" x 4" minimum, cover and fasteners are included. Base covers shall be two piece, interlocking construction. Finish shall match pole. Removable pole cap shall be provided with each drill pattern type pole. Non-structural fasteners shall be stainless steel.

FINISH - Galvanized poles per ASTM A123. Painted poles shall be semi-gloss powder paint.

GROUNDING - Grounding provision shall be immediately accessible through hand hole, 1/2-13 threads.

ANCHOR BOLTS - Steel anchor bolts shall be per AASHTO M314 or ASTM F 1554 - Grade 55, hot dip galvanize. Nuts and washers shall be per AASHTO M314-90 or ASTM F 1554 - hot dip galvanized.



POLE ORDERING DATA

How to construct a catalog number for SSS poles:

EXAMPLE SSS2555C D1 R3 BZ 1 Fill in Catalog Number _____

1 2 3 4 5

STEP	CATALOG NUMBER	DESCRIPTION
1. BASE POLE	(SEE SHEET 2)	SQUARE STRAIGHT STEEL
2. POLE TOP STYLE	D1 D2 D3 D4 D5 P2 P3 P4 P5	DRILLING FOR 1 UNIT DRILLING FOR 2 UNITS @ 180 DRILLING FOR 3 UNITS @ 90 DRILLING FOR 4 UNITS @ 90 DRILLING FOR 2 UNITS @ 90 TENON, 2.38 O.D. X 4" LG. TENON, 3.50 O.D. X 6" LG. TENON, 4.00 O.D. X 6" LG. TENON 2.88 O.D. X 4" LG.
3. POLE TOP DRILL PATTERN	H1 H3 J4 R2 R3 T3 W5 ND AF1 AF2 AF3 AF5 AF6	PARKPACK, HORZ NO ARM PARKPACK, HORZ WITH ARM MIRROSTAR ONLY MOD 600 & SOMERSET ONLY MONGOOSE ONLY POLESTAR ONLY PARKPACK, VERT NO ARM NO DRILL PATTERN AEL 53 AEL 153 AEL LS, LM AEL AVL W/A OPTION AEL ASA & AVL
4. FINISH	BK BZ GN GR HG PP WH	BLACK PAINT BRONZE PAINT GREEN PAINT GRAY PAINT HOT DIP GALVANIZED PRIME PAINT WHITE PAINT
5. OPTIONS	1 3 4	FESTOON BOX TAMPER RESISTANT SCREWS VIBRATION DAMPENER

Height, base, drill pattern, shaft size and thickness to be determined by Lighting Designer or Civil Consultant. Please consult Wind Speed Map for the Front Range of Colorado

NOTES:

- Pole top drill pattern types H1 - W5 are available on drilled pole tops only. ND is only available on tenon pole tops.
- The Festoon Box is located on the same side as the hand hole, 36" above pole base. Receptacle / Cover are not included.

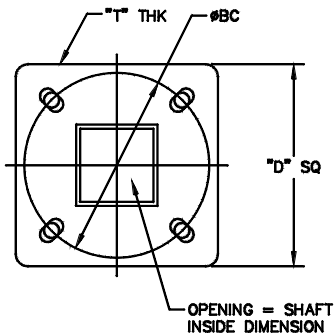
HOLOPHANE®

SSS.PMD (HL-2079) 5/29/13

SSS Square Straight Steel Poles

SSS Square Straight Steel Poles					NON-AASHTO Rating							
					90 mph + 1.14 gust		100 mph + 1.14 gust		110 mph + 1.14 gust			
Ref. Item No.	Base Pole Number	Nominal Pole Height	Nominal Shaft Size & Wall Thickness	EPA Vertical Offset from Top of Pole	Max EPA	Max Wt.	Max EPA	Max Wt.	Max EPA	Max Wt.	Bolt Circle Dia.	Anchor Bolt Size
1	SSS1044C	10	4.0 Square x 11 Ga.	0"	30.5	763	23.5	588	18.5	463	8.50	.75 x 17 + 3
				30"	23.0	575	18.0	450	14.2	355		
1	SSS1244C	12	4.0 Square x 11 Ga.	0"	23.5	588	18.0	450	13.5	338	8.50	.75 x 17 + 3
				30"	19.1	478	14.5	363	11.0	275		
1	SSS1444C	14	4.0 Square x 11 Ga.	0"	19.9	498	15.0	375	11.5	288	8.50	.75 x 17 + 3
				30"	15.0	375	11.0	275	8.5	213		
1	SSS1644C	16	4.0 Square x 11 Ga.	0"	14.0	350	9.5	238	8.9	223	8.50	.75 x 17 + 3
				30"	11.5	288	8.0	200	7.1	178		
1	SSS1844C	18	4.0 Square x 11 Ga.	0"	12.0	300	8.5	213	5.5	138	8.50	.75 x 17 + 3
				30"	10.0	250	7.0	175	4.5	113		
1	SSS2044C	20	4.0 Square x 11 Ga.	0"	9.6	240	6.7	167	4.5	150	8.50	.75 x 17 + 3
				30"	8.1	203	5.6	140	3.7	93		
2	SSS2044G	20	4.0 Square x 7 Ga.	0"	16.9	423	12.5	313	9.0	225	8.50	.75 x 17 + 3
				30"	14.4	360	10.5	263	7.5	188		
3	SSS2055C	20	5.0 Square x 11 Ga.	0"	17.7	443	12.7	343	9.4	235	11.00	.75 x 17 + 3
				30"	14.0	373	10.9	273	8.0	200		
3	SSS2055G	20	5.0 Square x 7 Ga.	0"	28.1	703	21.4	535	16.2	405	11.00	.75 x 17 + 3
				30"	23.0	575	17.4	435	13.2	330		
1	SSS2544C	25	4.0 Square x 11 Ga.	0"	4.8	150	2.6	100	1.0	50	8.50	.75 x 17 + 3
				30"	4.3	108	2.4	60	na	na		
2	SSS2544G	25	4.0 Square x 7 Ga.	0"	10.5	263	7.0	175	4.5	113	8.50	.75 x 17 + 3
				30"	9.0	225	6.0	150	4.0	100		
3	SSS2555C	25	5.0 Square x 11 Ga.	0"	9.8	245	6.3	157	3.7	150	11.00	.75 x 17 + 3
				30"	8.8	220	5.6	140	3.4	85		
3	SSS2555G	25	5.0 Square x 7 Ga.	0"	18.5	463	13.3	333	9.5	238	11.00	.75 x 17 + 3
				30"	15.6	390	11.3	283	8.0	200		
2	SSS3044G	30	4.0 Square x 7 Ga.	0"	6.0	150	3.5	88	1.5	38	8.50	.75 x 17 + 3
				30"	5.5	138	3.0	75	1.0	25		
3	SSS3055C	30	5.0 Square x 11 Ga.	0"	4.7	140	2.0	50	na	na	11.00	.75 x 17 + 3
				30"	4.4	110	1.6	40	na	na		
4	SSS3055G	30	5.0 Square x 7 Ga.	0"	10.7	267	6.7	167	3.9	100	11.00	1.00 x 36 + 4
				30"	9.9	248	6.4	160	3.6	90		
5	SSS3066G	30	6.0 Square x 7 Ga.	0"	19.0	475	13.2	330	9.0	225	12.00	1.00 x 36 + 4
				30"	17.6	440	12.2	305	8.3	208		
4	SSS3555G	35	5.0 Square x 7 Ga.	0"	5.9	150	2.5	100	na	na	11.00	1.00 x 36 + 4
				30"	5.6	140	2.4	60	na	na		
5	SSS3566G	35	6.0 Square x 7 Ga.	0"	12.4	310	7.6	190	4.2	105	12.00	1.00 x 36 + 4
				30"	11.9	298	7.8	183	4.0	100		
6	SSS3966G	39	6.0 Square x 7 Ga.	0"	8.0	200	3.8	95	na	na	12.00	1.00 x 36 + 4
				30"	7.6	190	3.5	90	na	na		

Height, base, drill pattern, shaft size and thickness to be determined by Lighting Designer or Civil Consultant. Please consult Wind Speed Map for the Front Range of Colorado



BASE DETAIL

Item No.	Bolt Circle Dia.	Min. Base Size "D"	Base Thk. "T"	Bolt Projection	Anchor Bolt Set	Bolt Circle Template
1	8.50	8.00	0.75	3.25 - 3.75	AB-26-4	TMP-40
2	8.50	8.00	0.88	3.38 - 3.88	AB-26-4	TMP-40
3	11.00	11.00	1.00	3.50 - 4.00	AB-26-4	TMP-45
4	11.00	11.00	1.00	4.00 - 4.50	AB-27-4	TMP-45
5	12.00	12.50	1.00	4.00 - 4.50	AB-27-4	TMP-47
6	12.00	12.00	1.00	4.00 - 4.50	AB-27-4	TMP-47

Parking Lot Fixture Example

Catalog # :

Project :

Prepared By :

Date :



Mirada Medium - MRM Outdoor LED Area Light

The Mirada's sleek design makes it perfectly-suited for architectural & commercial applications, while its cost-effective die-cast aluminum housing makes its acquisition cost very competitive. The Mirada offers high performance factory-rotatable silicone optics, 5 standard CCTs, 42,000+ delivered lumens, and is available with integral Airlink™ Wireless Controls.

Features & Specifications

Optical System

- State-of-the-Art one piece silicone optic sheet delivers industry leading optical control with an integrated gasket to provide IP66 rated sealed optical chamber in 1 component.
- Proprietary silicone refractor optics provide exceptional coverage and uniformity in IES Types 2, 3, 5W, FT and FTA.
- Silicone optical material does not yellow or crack with age and provides a typical light transmittance of 93%.
- Zero uplight.
- Available in 5000K, 4000K, 3000K, and 2700K color temperatures per ANSI C78.377. Also Available in Phosphor Converted Amber with Peak intensity at 610nm.
- Minimum CRI of 70. Optional 80 CRI available, consult factory for lead time.
- Integral Louver (IL) option available for improved back-light control without sacrificing street side performance. See page 5 for more details.

Electrical

- High-performance driver features over-voltage, under-voltage, short-circuit and over temperature protection.
- 0-10V dimming (10% - 100%) standard.
- Standard Universal Voltage (120-277 Vac) Input 50/60 Hz or optional High Voltage (347-480 Vac).
- L80 Calculated Life: >100k Hours (See Lumen Maintenance on Page 2)
- Total harmonic distortion: <20%
- Operating temperature: -40°C to +50°C (-40°F to +122°F). 42L lumen package rated to +40°C.
- Power factor: >.90
- Input power stays constant over life.
- Field replaceable surge protection device meets a minimum Category C Low operation (per ANSI/IEEE C62.41.2).
- High-efficacy LEDs mounted to metal-core circuit board to maximize heat dissipation
- Terminal block provided accepts up to 10ga wire.
- Components are fully encased in potting material for moisture resistance. Driver complies with FCC standards. Driver and key electronic components can easily be accessed.



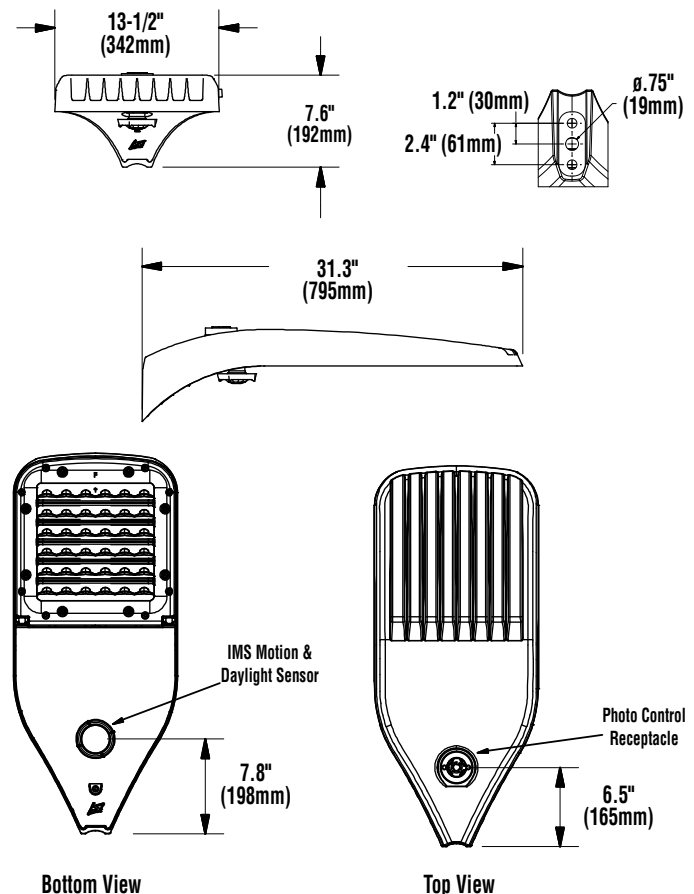
IP66



ARRA
Funding Compliant



Product Dimensions





Mirada Medium - MRM Outdoor LED Area Light

Features & Specifications (Cont.)

Construction

- Rugged die-cast aluminum housing contains factory prewired driver and optical unit. Cast aluminum wiring access door located underneath.
- Designed to mount to square or round poles.
- Luminaire is proudly manufactured in the U.S. of U.S. and imported parts.
- IP66 rated luminaire protects integral components from harsh environments.
- 3G rated for ANSI C136.31 high vibration applications
- Fixtures are finished with LSI's DuraGrip® polyester powder coat finishing process. The DuraGrip finish withstands extreme weather changes without cracking or peeling. Other standard LSI finishes available. Consult factory.
- Shipping weight: 30 lbs in carton.

Controls

Wireless Controls System

To make this fixture AirLink ready, simply order one of the following options:

- The integrated [Wireless Lighting Controller](#): ALSC or ALSCH (see ordering guide) as the controls option, or
- Integrated Wireless Controller option (above) with integrated motion sensor: ALSCS (ordering guide for mounting heights) or
- The 7-Pin Photoelectric Control Receptacle: CR7P as the controls option; and either the [5-Pin](#) or [7-Pin Twist Lock Controller](#): ALSC UNV TL5 or ALSC UNV TL7 as an accessory

To see how the components of AirLink system work together, reference the diagram in the controls section of this specs sheet. For more information on our AirLink products, visit our website: www.lsi-airlink.com/airlink-synapse/

Stand-Alone Controls

- The integral passive infrared motion sensor (IMS) activates switching of luminaire light levels (see the controls section for more details).
- The 7-pin ANSI C136.41-2013 photocontrol receptacle option (CR7P) is available for twist lock photocontrols or wireless control modules.
- The Button Type Photocells (PCI) are capable of switching luminaires ON/OFF in response to the amount of available daylight.

Installation

- A single fastener secures the hinged door, underneath the housing and provides quick & easy access to the electrical compartment for installing/servicing.
- Included terminal block provides quick and easy on-site wiring.
- Utilizes LSI's traditional 3" drill pattern for easy fastening of LSI products. (See drawing on page 1)

Warranty

- LSI LED Fixtures carry a 5-year warranty.

Listings

- Listed to UL 1598 and UL 8750.
- RoHS Compliant.
- American Recovery and Reinvestment Act Funding Compliant.
- IDA compliant; with 3000K color temperature selection.
- Title 24 Compliant; see local ordinance for qualification information.
- Suitable For wet Locations.
- IP66 rated Luminaire. IP66 rated optical chamber.
- 3G rated for ANSI C136.31 high vibration applications
- DesignLights Consortium® (DLC) qualified product. Not all versions of this product may be DLC qualified. Please check the DLC Qualified Products List at www.designlights.org/QPL to confirm which versions are qualified.

Performance

ELECTRICAL DATA (AMPS)*

Lumens	Watts	120V	208V	240V	277V	347V	480V
7L	53	0.4A	0.3A	0.2A	0.2A	0.2A	0.1A
9L	69	0.6A	0.3A	0.3A	0.2A	0.2A	0.1A
12L	94	0.8A	0.5A	0.4A	0.3A	0.3A	0.2A
18L	150	1.2A	0.7A	0.6A	0.5A	0.4A	0.3A
24L	187	1.6A	0.9A	0.8A	0.7A	0.5A	0.4A
30L	247	2.1A	1.2A	1.0A	0.9A	0.7A	0.5A
36L	317	2.6A	1.5A	1.3A	1.1A	0.9A	0.7A
42L	390	3.2A	1.9A	1.6A	1.4A	1.1A	0.8A

*Electrical data at 25C (77F). Actual wattage may differ by +/-10%

ELECTRICAL DATA - PHOSPHOR CONVERTED AMBER (AMPS)*

Lumens	Watts	120V	208V	240V	277V	347V	480V
9L	74.3	0.6A	0.4A	0.3A	0.3A	0.2A	0.2A
12L	102.9	0.9A	0.5A	0.4A	0.4A	0.3A	0.2A

*Electrical data at 25C (77F). Actual wattage may differ by +/-10%

RECOMMENDED LUMEN MAINTENANCE¹(24-42L)

Ambient	Initial ²	25 hr ²	50 hr ²	75 hr ³	100 hr ³
0-40 C	100%	100%	97%	94%	92%

RECOMMENDED LUMEN MAINTENANCE¹(7-18L)

Ambient	Initial ²	25 hr ²	50 hr ²	75 hr ³	100 hr ³
0-50 C	100%	96%	92%	88%	84%

- 1- Lumen maintenance values at 25C are calculated per TM-21 based on LM-80 data and in-situ testing.
- 2- In accordance with IESNA TM-21-11, Projected Values represent interpolated value based on time durations that are within six times the IESNA LM-80-08 total test duration for the device under testing.
- 3- In accordance with IESNA TM-21-11, Calculated Values represent time durations that exceed six times the IESNA LM-80-08 total test duration for the device under testing

DELIVERED LUMENS*

Lumen Package	Distribution	Phosphor Converted Amber (Peak 610nm)			Wattage
		Delivered Lumens	Efficacy	BUG Rating	
9L	2	5848	80	B2-U0-G2	74
	2 - IL	3644	50	B0-U0-G1	
	3	6018	82	B1-U0-G2	
	3 - IL	4468	61	B0-U0-G2	
	5W	5471	74	B3-U0-G1	
	FT	5801	79	B1-U0-G2	
	FT - IL	3649	50	B0-U0-G1	
	FTA	5924	81	B1-U0-G1	
12L	FTA - IL	4243	58	B1-U0-G1	102
	2	7530	74	B2-U0-G2	
	2 - IL	4692	46	B0-U0-G1	
	3	7749	76	B1-U0-G2	
	3 - IL	5753	57	B0-U0-G2	
	5W	7045	69	B3-U0-G2	
	FT	7470	73	B2-U0-G2	
	FT - IL	4699	46	B0-U0-G2	
	FTA	7628	75	B2-U0-G2	
	FTA - IL	5464	54	B1-U0-G1	

*LED Chips are frequently updated therefore values are nominal

LUMINAIRE EPA CHART - MRM

Tilt Degree	0°	30°	45°	Tilt Degree	0°	30°	45°
Single	0.5	1.5	1.9	T90°	1.0	2.5	2.8
D180°	1.0	1.5	1.9	TN120°	1.0	3.3	3.9
D90°	0.8	1.9	2.3	Q90°	1.0	2.5	2.8

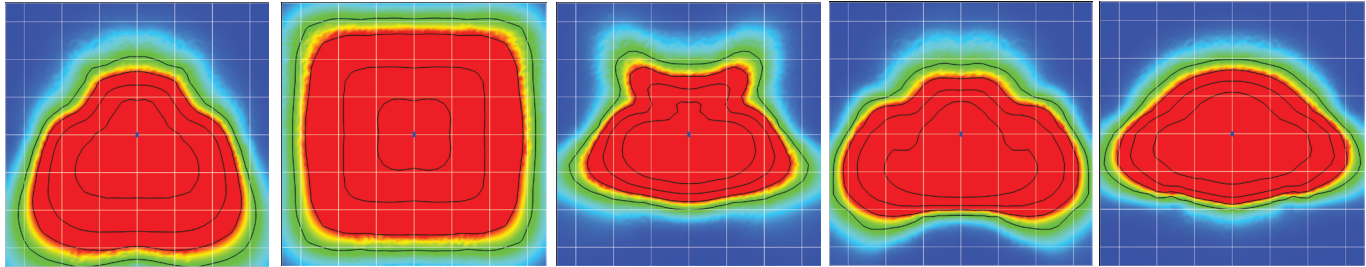
Specifications and dimensions subject to change without notice.



Mirada Medium - MRM Outdoor LED Area Light

Performance (Cont.)

All published luminaire photometric testing performed to IESNA LM-79 standards. ISO footcandle plots below demonstrate the Mirada (MRM) light patterns only. Not for total fixture output. For complete specifications and IES files, see website.



FT

5W

FTA

Type 3

Type 2

Ordering Guide

TYPICAL ORDER EXAMPLE: **MRM LED 36L SIL FTA UNV DIM 50 70CRI ALSCS04 BRZ IL**

Luminaire Prefix	Light Source	Lumen Package*	Light Output	Distribution	Orientation ¹	Voltage	Driver
MRM Mirada	LED	7L - 7,000 lms 9L - 9,000 lms 12L - 12,000 lms 18L - 18,000 lms 24L - 24,000 lms 30L - 30,000 lms 36L - 36,000 lms 42L - 42,000 lms *Consult factory for programmable wattages and lumen packages	SIL - Silicone	2 - Type 2 3 - Type 3 5W - Type 5 Wide FT - Forward Throw FTA - Forward Throw Automotive	(blank) - standard L - Optics rotated left 90 R - Optics rotated right 90	UNV - Universal Voltage (120-277V) HV - High Voltage (347-480V)	DIM - 0-10V Dimming (0-10%)

Color Temp	Color Rendering	Controls (Choose One)	Finish	Options
50 - 5,000 CCT 40 - 4,000 CCT 30 - 3,000 CCT ² 27 - 2,700 CCT ² AMB - Phosphor Converted Amber ^{2,3}	70CRI - 70 CRI 80CRI - 80 CRI²	(Blank) - None <u>Wireless Controls System</u> ALSC - AirLink Synapse Control System ⁴ ALSCH - AirLink Synapse Control System Host / Satellite ^{4,5} ALSCS01 - AirLink Synapse Control System with 8-12' Motion Sensor ⁴ ALSCHS01 - AirLink Synapse Control System Host / Satellite with 8-12' Motion Sensor ^{4,5} ALSCS02 - AirLink Synapse Control System with 12-20' Motion Sensor ⁴ ALSCHS02 - AirLink Synapse Control System Host / Satellite with 12-20' Motion Sensor ^{4,5} ALSCS04 - AirLink Synapse Control System with 20-40' Motion Sensor ⁴ ALSCHS04 - AirLink Synapse Control System Host / Satellite with 20-40' Motion Sensor ^{4,5} <u>Stand-Alone Controls</u> EXT - 0-10v Dimming (from external signal) IMSOM1 - Integral Motion Sensor 8-12' 120-277V ^{4,6} IMSOM2 - Integral Motion Sensor 12-20' 120-277V ^{4,6} IMSOM4 - Integral Motion Sensor 20-40' 120-277V ^{4,6} IMSOM1HV - Integral Motion Sensor 8-12' 347-480V ^{6,11} IMSOM2HV - Integral Motion Sensor 12-20' 347-480V ^{6,11} IMSOM4HV - Integral Motion Sensor 20-40' 347-480V ^{6,11} CR7P - 7 Pin Control Receptacle ANSI C136.41 ⁷ <u>Button Type Photocells</u> PCI120 - 120V PCI208-277 - 208 - 277V PCI347 - 347V	BRZ - Bronze BLK - Black GPT - Graphite MSV - Metallic Silver WHT - White PLP - Platinum Plus SVG - Satin Verde Green	(Blank) - None IL - Integral Louver HSS ¹

Lumen Package, Distribution, Orientation, Voltage, Driver, CRI, and any options to be determined by Lighting Designer



Mirada Medium - MRM Outdoor LED Area Light

Accessory Ordering Information

Description	Order Number	Description	Order Number
PC120 Photocell for use with CR7P option (120V) ⁹	122514	Pole Quick Mount Bracket - Square Pole ¹⁰	687073CLR
PC208-277 Photocell for use with CR7P option (208V, 240V, 277V) ⁹	122515	Pole Quick Mount Bracket - 4-5" Round Pole ¹⁰	689903CLR
PC347 Photocell for use with CR7P option (347V) ⁹	122516	15° Tilt Pole Quick Mount Bracket - Square Pole ¹⁰	688003CLR
PC480 Photocell for use with CR7P option (480V) ⁹	1225180	15° Tilt Pole Quick Mount Bracket - 4-5" Round Pole ¹⁰	689905CLR
ALSC UNV TL5 - Airlink 5Pin Twist Lock Controller ^{4,9}	661409	BKS XBO WM * CLR Wall Mount Bracket ¹⁰	382132CLR
ALSC UNV TL7 - Airlink 7Pin Twist Lock Controller ^{4,9}	661410	BKA-XMA-XALM-CLR	652761
PMOS24 - 24V Pole-Mount Occupancy Sensor (ALSC/H Compatible) ¹⁰	663284CLR	FK120 Single Fusing (120V)	FK120 ¹²
IMS/PC Remote Configurator Tool	584929	FK277 Single Fusing (277V)	FK277 ¹²
IL - Integral Louver HSS	684812	DFK480 Double Fusing (480V)	DFK480 ¹²
Universal Mounting Bracket (UMB) ¹⁰	684616CLR	FK347 Single Fusing (347V)	FK347 ¹²
Adjustable Slip Fitter (ASF) ¹⁰	688138CLR		

FOOTNOTES:

- 1 - Not available on "Type V" distribution.
- 2 - Consult Factory for availability.
- 3 - Only available in 9L and 12L Lumen Packages
- 4 - Not available in HV.
- 5 - Consult Factory for Site Layout
- 6 - IMS is field adjustable, via a hand held Remote Configurator Tool, which must be ordered separately. See Accessory Ordering Information.

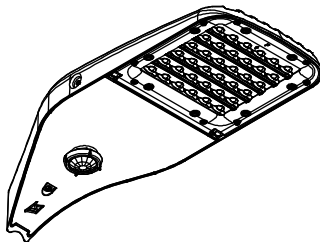
- 7 - Control device must be ordered separately. 7 pin standard. See Accessory Ordering Information.
- 8 - Accessories are shipped separately and field installed.
- 9 - Factory installed CR7P option required. See Options.
- 10 - "CLR" denotes finish. See Finish options.
- 11 - Not available in UNV.
- 12 - Fusing must be located in hand hole of pole.

Accessories/Options

Integral Louver (IL)

Accessory Integral Louver available for improved back-light control without sacrificing street side performance. LSI's Integral Louver (IL) option delivers backlight control that significantly reduces light spill behind the pole for applications with pole locations close to adjacent properties. The integrated louvers' design maximizes forward-reflected light while reducing glare, maintaining the optical distribution selected, and most importantly, eliminating light trespass. IL rotates with optical distribution.

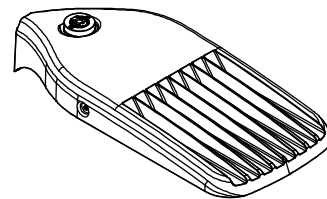
Luminaire Shown with Integral Louver (IL)



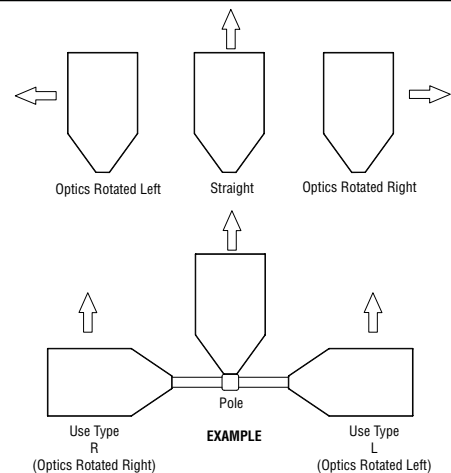
7 Pin Photoelectric Control

7-pin ANSI C136.41-2013 control receptacle option available for twist lock photocontrols or wireless control modules. Control accessories sold separately. Dimming leads from the receptacle will be connected to the driver dimming leads (Consult factory for alternate wiring).

Fixture Shown with CR7P



Optics Rotation





Mirada Medium - MRM Outdoor LED Area Light

Stand-alone Controls: Occupancy Sensor (IMS)

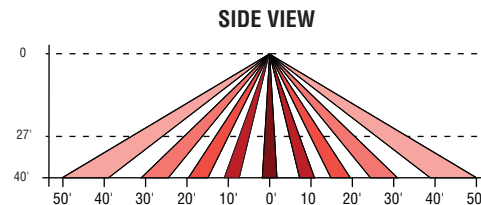
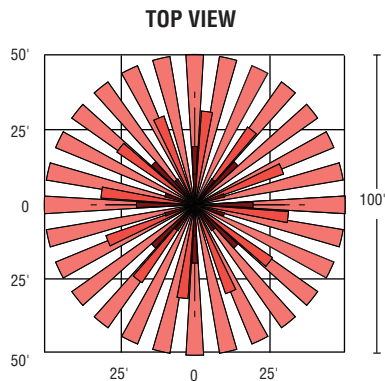
The integral passive infrared motion sensor activates switching of luminaire light levels. Standard Factory settings: High level light is activated and increased to full bright upon detection of motion. Lowlight level (10% maximum drive current) is activated when target zone is absent of motion activity for ~5 minutes. See coverage diagram for detection cone.

The Remote Configurator Tool allows for easy and safe programming of each luminaire from ground level. See the [Remote Configurator User Guide](#) for programming instructions.

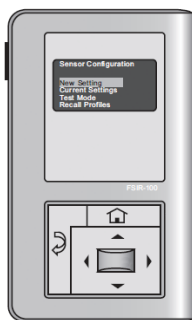
When ordering the Stand-alone Occupancy Sensor on the fixture, you must include IMS (see ordering guide for mounting height options) as the controls option in the fixture nomenclature.

To order as a motion sensor with the AirLink Wireless Control System, see ordering guide under "Wireless Controls System" and select the ALSCS controls option with the desired mounting height.

IMS Coverage Diagrams



Remote Configurator Tool



Luminaire Shown with IMS





Parking Lot Pole Example

Mirada Medium - MRM
Outdoor LED Area Light

poles & Brackets

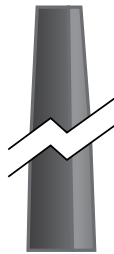
LSI offers a full line of poles and brackets to complete your lighting assembly. Our USA manufacturing facility has the same high quality standards for our poles and brackets as we do our lighting fixtures.



Steel
Square
Pole
14'-39'



Steel
Round
Pole
10'-30'



Steel
Tapered
Pole
20'-39'



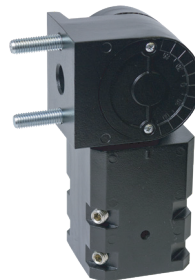
BKA UMB CLR

The 3G rated Universal Mounting Bracket (UMB) allows for seamless integration of LSI Luminares onto existing or new construction poles. The UMB bracket was designed specifically for square or round (tapered/straight) poles with (2) mounting hole spaces between 3.5"-5".

BKA-XMA-XALM-CLR



The Mirada Slip Fitter is a aesthetically pleasing 3G rated die cast aluminum adapter. Designed specifically to mount the MRM onto a 2" (51mm) IP, 2.375" (60mm) O.D. tenon. The Mirada Slip Fitter allows for leveling via integrated steps to adjust the luminaire +/- 3 Degrees.



BKA ASF CLR

The adjustable Slip Fitter is a 3G rated rugged die cast aluminum adapter to mount LSI luminaires onto a 2" (51mm) IP, 2.375" (60mm) O.D. tenon. The Adjustable Slip Fitter can be rotated 180° allowing for tilting LSI luminaires up to 45° and 90° when using a vertical tenon.



BKS PQMH CLR

The Pole Quick Mount Bracket allows for lightning fast installation of LSI luminaires onto existing and new construction poles with LSI's 3" or 5" standard bolt patterns.



BKS PQM15 CLR

The Pole Quick Mount Bracket allows for preset 15° uptilt of LSI luminaires for greater throw of light and increased vertical illumination as well as fast installation onto poles with LSI's 3" or 5" bolt pattern.

Height, base, drill pattern, shaft size and thickness to be determined by Lighting Designer or Civil Consultant. Please consult Wind Speed Map for the Front Range of Colorado

Pedestrian Fixture Example



LED LEXINGTON DECORATIVE AREA LIGHTS (XLXM3)



US patent 782456, 7952293, & 8432108 and US & Int'l. patents pending

SMARTTEC™ - LSI drivers feature integral sensor which reduces drive current, when ambient temperatures exceed rated temperature.

ENERGY SAVING CONTROL OPTIONS - DIM - 0-10 volt dimming enabled with controls by others. BLS - Bi-level switching responds to external line voltage signal from separate 120-277V controller or sensor (by others), with low light level decreased to 30% maximum drive current.

EXPECTED LIFE - Minimum 60,000 hours to 100,000 hours depending upon the ambient temperature of the installation location.

LEDS - Select high-brightness LEDs in Cool White (5000K nominal) or **Neutral White (4000K nominal)** color temperature, 70CRI (nominal).

DISTRIBUTION/PERFORMANCE - Types 3, FT, and 5. Exceptional uniformity creates bright environment at lower light levels. Improved backlight cutoff minimizes light trespass.

HOUSING - One piece housing/support frame is die-cast aluminum. Post top access cover and support arms are die-cast aluminum. Housing is sealed with an extruded silicone gasket.

HOUSING TOP CAP - Removable spun aluminum cap/driver enclosure is retained by captive stainless steel fasteners and safety cables. Housing and top cap interface is sealed with a one-piece extruded silicone gasket. Tool-less entry option is available.

SEALED OPTICAL UNIT - Lens is clear, flat tempered glass, sealed to aluminum optics housing. Pressure stabilizing breather allows super-tight protection while preventing temperature cycling from building up internal pressures and vacuums that can stress optical unit seals and components.

FASTENERS - All exposed fasteners are black oxide coated stainless steel. Internal fasteners are stainless steel or zinc electroplated steel.

ELECTRICAL - Terminal block for attachment of incoming primary wiring is supplied. Two-stage surge protection (including separate surge protection built into electronic driver) meets IEEE C62.41.2-2002, Location Category C. Available with universal voltage power supply 120-277VAC (50/60Hz input), 347VAC and 480VAC. Optional button-type photocells (PCI) are available in 120, 208, 240, 277 or 347 volt (supply voltage must be specified).

DRIVER - Available in Super Saver (SS) and High Output (HO) drive currents (Drive currents are factory programmed). State-of-the-art driver technology designed specifically for LSI LED light sources provides unsurpassed system efficiency. Components are fully encased in potting material for moisture resistance. Driver complies with IEC and FCC standards.

OPERATING TEMPERATURE - -40°C to +50°C (-40°F to +122°F).

MOUNTING - Post Top and Wall mounting available. Pole selection information shown under fixture drawings.

FINISH - Fixtures are finished with LSI's DuraGrip® polyester powder coat finishing process. The DuraGrip finish withstands extreme weather changes without cracking or peeling.

WARRANTY - LSI LED fixtures carry a limited 5-year warranty.

PHOTOMETRICS - Please visit our web site at www.lsi-industries.com for detailed photometric data.

LISTING - Listed to U.S. and Canadian safety standards. Suitable for wet locations.

LIGHT OUTPUT - XLXM3					
POST TOP MOUNT					
	# of LEDS	Type 3	Lumens (Nominal)		Watts (Nominal)
			Type FT	Type 5	
Cool White	SS 64	6180	5570	5240	70
	HO 64	8670	8270	7510	108
Neutral White	SS 64	5930	5350	5150	70
	HO 64	8250	7560	6890	108

LED Chips are frequently updated therefore values may increase.

Also available in traditional light sources

This product, or selected versions of this product, meet the standards listed below. Please consult factory for your specific requirements.



Fixtures comply with ANSI C136.31-2010 American National Standard for Roadway Lighting Equipment - Luminaire Vibration 1.5G requirements.



Project Name _____ Fixture Type _____
Catalog # _____

01/15/15
© 2015
LSI INDUSTRIES INC.

LED LEXINGTON DECORATIVE AREA LIGHTS (XLXM3)

LUMINAIRE ORDERING INFORMATION

TYPICAL ORDER EXAMPLE:

Prefix	Mounting Style	Distribution	Light Source	Drive Current	Color Temperature	Input Voltage	Finish	Options
XLXM3	PT - Post Top	3 - Type III FT - Forward Throw 5 - Type V	LED	SS - Super Saver HO - High Output	CW- Cool White NW- Neutral White	UE - Universal Electronic (120-277V 50/60Hz) 347-480	BRZ - Bronze BLK - Black PLP - Platinum Plus WHT - White SVG - Satin Verde Green GPT - Graphite MSV - Metallic Silver	Button Type Photocells PCI 120 - 120v PCHV208-277 - 208-277v PCI 347 - 347v TE - Tool-less Entry DIM - 0-10V Dimming (from external source) ¹ BLS - Bi-level Switching (from external 120-277V signal) ¹ Accessories WM - Wall Mount BK MPT B04 - Medium Bolt on Bracket (for PT 180) For 4" Dia. Round Poles ² BK MPT B05 - Medium Bolt on Bracket (for PT 180) For 5" Dia. Round Poles ²

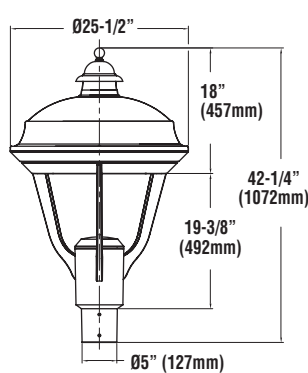
FOOTNOTES:

1- DIM and BLS cannot be ordered together.

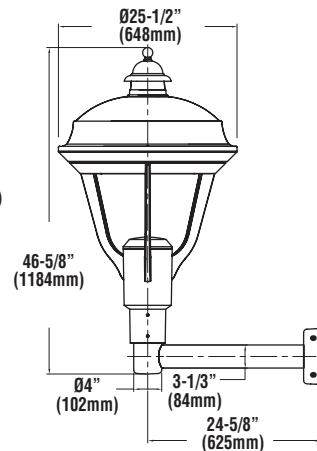
2- Order poles with 3" reduced drilling pattern. For PT mounting configurations other than D180, consult factory. Order one bracket per fixture.

Distribution, Drive Current, Input Voltage, and any options to be determined by Lighting Designer

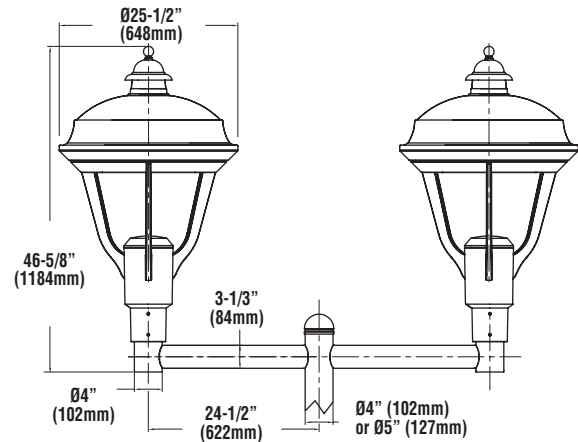
DIMENSIONS



Post Top Single
Slipfits 4" Dia. Tenon (4N) or Pole



Post Top with WM Accessory



Post Top with BK MPT B0 (x2)
Mounts to 4" or 5" Dia. D180 Bolt-on Pole
(select 3" reduced drilling pattern)

LUMINAIRE EPA CHART - Crossover Lexington

	MOUNTING STYLE	
■ PT Single	PT	1.4
■ PT D180° with BK MPT B0 (2)	PT	2.7

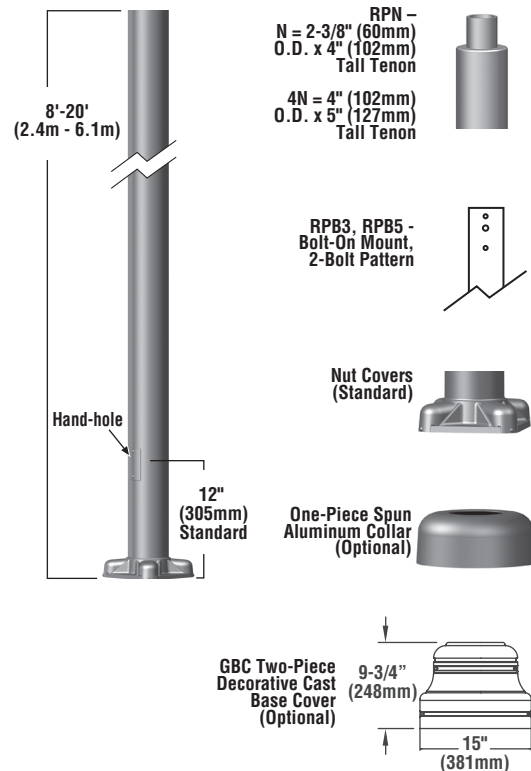
SHIPPING WEIGHTS - Crossover Lexington

Catalog Number	Est. Weight (kg/lbs.)
XLXM3 (PT)	29/64

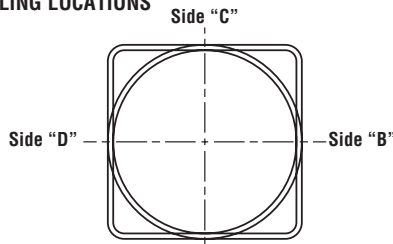
Pedestrian Pole Example

ALUMINUM ROUND POLES

DIMENSIONS



DRILLING LOCATIONS



Sides	A	B	C	D
Hand-hole	X			
Single	X			
D180°		X		X
D90°	X			X
T90°	X	X		X
TN120°	X			
Q90°	X	X	X	X

*Other two locations will be 120° to the left and right side of A.

POLE SHAFT - The pole shaft is extruded from seamless alloy aluminum. On tenon mount poles, tenon is of high-strength pipe. Tenon N option is 2-3/8" O.D. x 4" tall. Tenon 4N option is 4" O.D. x 5" tall. Aluminum round poles are 4" and 5" in diameter.

HAND HOLE - Covered and gasketed 2" x 4" non-reinforced hand-hole is located 12" above bottom of pole base. For pole with greater EPA rating, reinforced hand hole is available as an option; consult factory. Optional festoon for GFI receptacle (with or without GFI Kit supplied) is available. Minimum height for location of festoon is 18" above standard hand hole.

BASE - Pole base is cast from 356 alloy aluminum. Completed assembly is heat-treated to a T6 temper. Aluminum nut covers are included with anchor base.

BASE COVERS - Aluminum nut covers are included with anchor base. Optional two-piece decorative die-cast aluminum (GBC) base covers or optional one-piece spun aluminum collars are available. Must be ordered separately.

ANCHOR BOLTS - Set of four anchor bolts conform to ASTM F1554 Grade 55. Each bolt is provided with two hex nuts and two flat washers. Bolts have an "L" bend on one end and are galvanized a minimum of 12" on the threaded end.

GROUND LUG - Ground lug is standard.

GROUND FAULT CIRCUIT INTERRUPTER - Ground fault circuit interrupter kit is optional. Pole Preparation (festoon) with GFI Kit must be ordered. Specify location in feet above base of pole and side orientation. Minimum height for location of festoon is 18" above standard hand hole.

FINISHES - Baked-on polyester-powder finish provides one year limited warranty.

DETERMINING THE LUMINAIRE/POLE COMBINATION FOR YOUR APPLICATION:

- Select luminaire from luminaire ordering information
- Select bracket configuration if required
- Determine EPA value from luminaire/bracket EPA chart
- Select pole height
- Select MPH to match wind speed in the application area (See windspeed map).
- Confirm pole EPA equal to or exceeding value from note above
- Confirm total luminaire/bracket weight does not exceed maximum weight shown in chart below
- Consult factory for special wind load requirements and banner brackets

POLE SELECTION CHART: 4" (102mm) and 5" (127mm) aluminum round poles

Height	EPA				Outside Dimensions	Material	Max Weight (lbs) ¹	Bolt Circle	Structure Weight (lbs) ²
	70 MPH	80 MPH	90 MPH	100 MPH					
8' (2.4m)	10.7	7.9	6.0	4.7	4" (102mm)	0.125	75	E	19
10' (3.0m)	8.1	5.9	4.3	3.3	4" (102mm)	0.125	75	E	22
10' (3.0m)	15.4	11.5	8.9	7.1	5" (127mm)	0.125	100	F	27
12' (3.7m)	6.2	4.3	3.0	2.2	4" (102mm)	0.125	75	E	26
12' (3.7m)	12.2	9.0	6.9	5.5	5" (127mm)	0.125	100	F	32
12' (3.7m)	15.5	11.5	8.9	7.1	5" (127mm)	0.156	100	F	38
12' (3.7m)	18.8	14.0	10.9	8.7	5" (127mm)	0.188	100	F	45
14' (4.3m)	4.6	3.0	1.9	1.2	4" (102mm)	0.125	100	E	30
14' (4.3m)	9.7	6.9	5.3	4.1	5" (127mm)	0.125	100	F	36
14' (4.3m)	12.5	9.1	7.0	5.5	5" (127mm)	0.156	100	F	44
14' (4.3m)	15.3	11.2	8.7	6.9	5" (127mm)	0.188	100	F	52
16' (4.9m)	3.2	1.9	1.0	0.5	4" (102mm)	0.125	100	E	33
16' (4.9m)	7.4	5.1	3.8	3.0	5" (127mm)	0.125	100	F	41
16' (4.9m)	9.8	6.9	5.3	4.1	5" (127mm)	0.156	100	F	50
16' (4.9m)	12.2	8.7	6.7	5.3	5" (127mm)	0.188	100	F	58
18' (5.5m)	5.6	3.7	2.7	2.0	5" (127mm)	0.125	100	F	45
18' (5.5m)	7.7	5.2	3.9	3.0	5" (127mm)	0.156	100	F	55
18' (5.5m)	9.7	6.8	5.1	4.0	5" (127mm)	0.188	100	F	65
20' (6.1m)	4.1	2.4	1.7	1.2	5" (127mm)	0.125	100	F	50
20' (6.1m)	5.9	3.8	2.8	2.0	5" (127mm)	0.156	100	F	61
20' (6.1m)	7.6	5.2	3.8	2.9	5" (127mm)	0.188	100	F	72

† EPA based on AASHTO LTS-3-94. For applications in Canada, areas using code requirements other than AASHTO LTS-3-94, and for banner brackets, consult factory. Designs are limited to top-mounted and side-mount luminaires. Variations from sizes above are available, consult factory. Satisfactory performance of poles is dependent upon the pole being properly attached to a supporting foundation of adequate design. Refer to EPA information on next page. Maximum luminaire/bracket weight is shown on the above chart.

1- Maximum weight of fixtures/brackets to be mounted to pole.

2- Structure weight is a nominal value which includes the pole shaft and base plate.

ARRA
Funding Compliant



Project Name _____ Fixture Type _____
Catalog # _____

01/23/15

© 2015

LSI INDUSTRIES INC.

ALUMINUM ROUND POLES

POLE ORDERING INFORMATION

TYPICAL ORDER EXAMPLE:

Pole Series	Material	Height ³	Mounting Configuration	Pole Finish	Options
Bolt-On Mount¹ - See selection guide for patterns and fixture matches. 4RPB3 - 3" Reduced Drilling Pattern 5RPB3 - 3" Reduced Drilling Pattern 4RPB5 - 5" Traditional Drilling Pattern 5RPB5 - 5" Traditional Drilling Pattern	A125 - .125 Aluminum A156 - .156 Aluminum A188 - .188 Aluminum	8' 10' 12' 14' 16' 18' 20'	S - Single/Parallel D180° - Double D90° - Double T90° - Triple TN120° - Triple Q90° - Quad	BRZ – Bronze BLK – Black WHT – White SVG - Satin Verde Green MSV - Metallic Silver	RHH - Reinforced Hand Hole ⁴ FP - Festoon Outlet Provision Less GFI Kit ⁵ FPG - Festoon Outlet Provision With GFI Kit ⁵ LAB - Less Anchor Bolts
Tenon Mount - See selection guide for tenon and fixture/bracket matches. 4RPN 5RPN²			N – Tenon Mount 4N - Tenon Mount (Available with 5RPN only. For 4" poles, use 4RPSF below)		
Greenlee Slipfit - Use with Greenlee Lifestyle CC, SC & CH mounting styles. Enterprise, Intrepid & Lexington PT single mounting styles ² 4RPSF	Consult Pole Selection Chart on opposite page		*		
Greenlee Universal Bracket¹ (No Drilling) - Use with Lifestyle UCLS and UCLD180 4RPI 5RPI					

FOOTNOTES:

- Standard pole cap provided. Domed Greenlee pole cap will ship with SA4 and SA5 Enterprise, Intrepid and Lexington fixtures, SA Lifestyle fixtures, BK SPT BO, BK MPT BO and UCL brackets.
- For Enterprise, Intrepid and Lexington D180° or other mounting configuration styles using BK SPT BO and BK MPT BO accessories, order 4RPB3 or 5RPB3 pole.
- Pole heights will have +/- 2" tolerance.

4 - Reinforced hand-holes are 2-3/8" x 4" on 4" dia. round poles and 3" x 5" on 5" dia. round poles. Both are located 18" above bottom of pole base.

5 - Specify location in feet above base of pole and side orientation. Minimum height is 18" above standard hand hole.

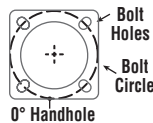
6 - Banner Brackets will add EPA to pole.

ACCESSORY ORDERING INFORMATION (Accessories are field installed)

Description	Order Number
4 / 5 GBC - Decorative Base Cover	483859CLR
4RSAC - 4" Round 1-Piece Spun Aluminum Collar	506859CLR
5RSAC - 5" Round 1-Piece Spun Aluminum Collar	506860CLR
BBB - Breakaway Banner Brackets ⁶	Consult Factory ⁶

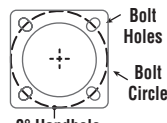
BOLT CIRCLE

4" (102mm) Round
8-15/16" (226mm) Square Base Plate



7-1/2" (191mm) Dia. Bolt Circle
+/- 3/4" (19mm)

5" (127mm) Round
9-5/8" (244mm) Square Base Plate



8-5/8" (219mm) Dia. Bolt Circle
+/- 7/8" (22mm)

	E	F
Bolt Circle	7-1/2" +/- 3/4" (191mm +/- 19mm)	8-5/8" +/- 7/8" (219mm +/- 22mm)
Anchor Bolt Size	3/4" dia. x 17" x 3" hook (19mm x 432mm x 76 mm)	3/4" dia. x 17" x 3" hook (19mm x 432mm x 76 mm)
Anchor Bolt Projection	3-1/4" (83mm)	3-1/4" (83mm)
Base Plate Dimensions	8-15/16" sq. x 5/8" thk. (226mm x 16mm)	9-5/8" sq. x 5/8" thk. (244mm x 16mm)

Note: Base plate illustrations may change without notice. Do not use for setting anchor bolts. Consult factory for the base plate templates.

EPA INFORMATION

All poles are guaranteed to meet the EPA requirements listed. Pole manufacturer is not responsible if a pole order has a lower EPA rating than the indicated wind-loading zone where the pole will be located.

CAUTION: This guarantee does not apply if the pole/bracket/fixture combination is used to support any other items such as flags, pennants, or signs, which would add stress to the pole. Pole manufacturer cannot accept responsibility for harm or damage caused in these situations.

NOTE: Pole calculations include a 1.3 gust factor over steady wind velocity. Example: poles designed to withstand 80 MPH steady wind will withstand gusts to 104 MPH. EPAs are for locations 100 miles away from hurricane ocean lines. Consult LSI for other areas. Note: Hurricane ocean lines are the Atlantic and Gulf of Mexico coastal areas. For applications in Canada, areas using code requirements other than AASHTO LTS-3-94, and for banner brackets, consult factory.

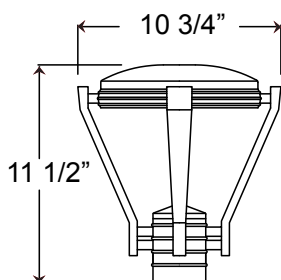
Pole Series, height, material (thickness), and any options to be determined by Lighting Designer or Civil Consultant. Please consult Wind Speed Map for the Front Range of Colorado

Pedestrian Fixture Example

Project: _____

Fixture Type: _____ Quantity: _____

Customer: _____



Specifications

Material:

All parts are durable 356 cast aluminum. All hardware provided shall be stainless steel or zinc plated steel.

Fixture Mounting:

Post Mount: Post Cap with set screws. Fits 3" poles.

Drivers:

Universal voltage 120-277 is standard. 0-10V, TRIAC and ELV dimming protocols are standard for LED modules. (24w is 0-10v only)

See page 2 table for LED module and driver specs, voltage and dimming protocols.

Electrical:

Approximately 12" of pull wire extends from luminaire. Additional pull wire provided for post mount arms and wall mounts.

Illuminating
ENGINEERING SOCIETY**Finish:**

A polyester powder coat high quality finish is electro-statically applied and baked at 430° for exceptional durability and color retention. Products undergo an intensive five-step cleansing and pretreatment process for maximum paint adhesion.

Marine grade finish provides superior salt, humidity and UV protection. This coating withstands up to 3000 hours of continuous salt spray, comes with a 5-year warranty and is available in either a textured or gloss surface.

Modifications:

Consult factory for custom or modified luminaires.

LA220
LED

Weight: 8.0 lbs

EPA: 0.27

Catalog Logic

LA220 - 1 - M010LD - D - T5 - 40K - PC - PA5651 - 72

Luminaire Series Pendant or Post Mount Light Source & Wattage Dimming Optics CCT Accessories Mounting Source Finish

Catalog Number

LA220

1

2

3

4

5

6

7

8

1

1

D

1 FIXTURE ORIENTATION

1 Post

2 LIGHT SOURCE & WATTAGES

M009LD (9w, 850 lumen, Cree module)

M010LD (10w, 1250 lumen, Cree module)

3 DIMMING

D (Dimming)

See page 2 table for LED engine and driver specs, voltage and dimming protocols.

4 OPTICS

W (T5 Wide Distribution with Dome LED Lens)

N (T5 Narrow Distribution with Flat LED Lens)

5 COLOR TEMPERATURE (CCT)

27K (2700K)

30K (3000K)

35K (3500K)

40K (4000K)

6 ACCESSORIES

HSS90 (90° House Side Shield, polished)

HSS120 (120° House Side Shield, polished)

*EMG-LED5 (5w, LED Emergency Driver, remote placement, Cree module only)

*EMG-LED7 (7w, LED Emergency Driver, remote placement, Cree module only)

*EMG-LED10 (10w, LED Emergency Driver, remote placement, Cree module only)

HLMSPC (High-Low Motion Sensor/Photocell; 0-10v Dimming Required)

PC (Button Photo Cell)

SP (Surge Protector, 10kA & 10kV)

TLPC (Twist Lock photo cell & receptacle)

TL (Twist Lock receptacle only)

TL5 (5-pin Twist Lock receptacle)

TL7 (7-pin Twist Lock receptacle)

*For Emergency lumen output data, see Resources section at www.ANPlighting.com.

7 MOUNTING SOURCE

Post Mount Arms
*See Page 3 for Style/Size

PA3321

PA8521

Wall Mount Arms
*See Page 3 for Style/Size

WM2141

WM7421

PA5151

PA8571

WM2211

WM8021

PA5411

WM3001

PA5611

WM3351

PA5621

WM4511

PA5651

WM5131

PA6211

WM5161

PA6311

WM5311

PA7911

WM5601

PA8031

WM5611

Column Mount

*See Page 3 for Style/Size

CM Column Mount

8 FINISHES

Standard Grade	Marine Grade		Standard Grade	Marine Grade	
40	NA	Raw Unfinished	53	100	Copper Clay
41	101	Black	56	109	Silver
42	102	Forest Green	61	106	Black Verde
43	114	Bright Red	70	118	Painted Chrome
44	107	White	71	105	Painted Copper
45	112	Bright Blue	72	108	Textured Black
46	123	Sunny Yellow	73	125	Matte Black
47	120	Aqua Green	76	121	Textured Architectural Bronze
49	NA	Galvanized	77	127	Textured White
50	111	Navy	78	124	Textured Silver
51	103	Architectural Bronze	10	130	Aspen Green
52	104	Patina Verde	11	131	Cantaloupe
12	133	Lilac	13	132	Putty

Consult factory for additional paint charges and availability

Light Source & Wattages, Dimming, Optics, Accessories, Mounting Source, and any other options to be determined by Lighting Designer

Project: _____
 Fixture Type: _____ Quantity: _____
 Customer: _____

LED PERFORMANCE

MODULE

LED Wattage	CCT	Typical Luminous Flux	System Wattage	Typical Efficacy
9W	2700K	850	11W	97
	3000K	850	11W	97
	3500K	850	11W	97
	4000K	850	11W	97
10W	2700K	1250	12W	125
	3000K	1250	12W	125
	3500K	1250	12W	125
	4000K	1250	12W	125

MODULE SPECIFICATION

- Efficacy 65-125 lumens per watt
- Dimmable down to 1%
- Life: L70 50,000 hours
- Color temp: 2700K, 3000K, 3500K and 4000K
- CRI: >90

MODULE DRIVER SPECIFICATION

- Input Voltage: 120-277 Volts; 50/60Hz
- 0-10V, TRIAC and ELV dimming protocols are standard. (24w is 0-10v only)
- Output Current: Constant Current: 440mA to 940mA (model dependent)
- Driver Efficiency > 80%; Power Factor > 0.9
- Integral Surge Protection in conformance to ANSI C62.41 Category A

MODULE LISTINGS

- Fully compliant with the RoHS Directive
- Certifications: CE/UL

WARRANTY

See www.anplighting.com for complete fixture warranty.

- 5 year limited warranty on Modules/Drivers

*Limited Warranty: A typical year is defined as 4380 hours of operation.

Pedestrian Pole Example

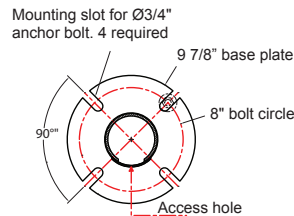
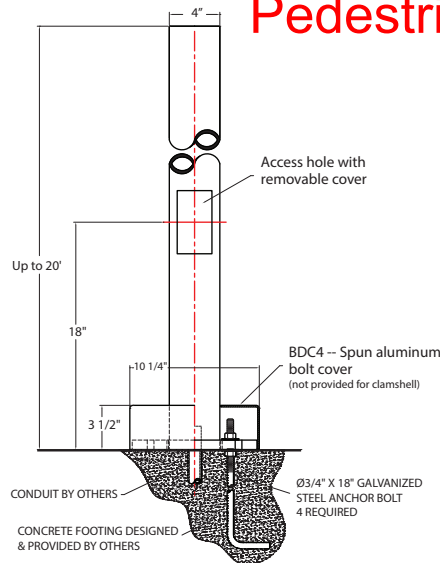
Project: _____

Fixture Type: _____ Quantity: _____

Customer: _____



Illuminating
ENGINEERING SOCIETY



MOUNTING DETAIL

Various heights and fixture configurations may require a different bolt circle. Consult factory for specific bolt circle required.

Material

Aluminum pole bases and base plates shall be cast from 356 aluminum alloy. Shafts shall be extruded 6061-T6 aluminum. Available in 3", 4" or 5" diameter. Wall thickness 0.125" or 0.188" or 0.250.

Mounting

Four anchor bolts provided are 3/4"x18". Anchor bolts, nuts and washers are hot dipped galvanized steel. Spun aluminum bolt cover provided.

Access

All poles are provided with a hand access opening and cover. Hand hole cover is secured by two stainless steel machine screws. (Tamper-proof screws provided upon request).

Grounding

All poles are provided with an aluminum grounding lug integrated to inner wall of shaft, 180 degrees to hand hole. Grounding lug is drilled and tapped to accommodate 1/4-20 stainless steel machine screw.

Pole Height

Maximum pole height is 20-feet.

Accessories

Banner arms, ladder rests, signage, flag pole holder and GFI receptacles are optional.

Finish

A polyester powder coat high quality finish is electro-statically applied and baked at 430° for exceptional durability and color retention. Products undergo an intensive five-step cleansing and pretreatment process for maximum paint adhesion.

Marine grade finish provides superior salt, humidity, and UV protection. This coating withstands up to 3000 hours of continuous salt spray, comes with a 5-year warranty and is available in either a textured or gloss surface.

Catalog Logic

BD3S10.125 - **BAA** - **CCS1902** - **41**

Pole Accessory Clamshell Finish

Catalog Number

1 2 3 4

See page 2 for more ordering info

Item Number	OD	Height	Wall	80 MPH	100 MPH
BD3S3	3	3	0.125	10.10	6.20
BD3S4	3	4	0.125	9.20	5.30
BD3S5	3	5	0.125	8.00	4.70
BD3S6	3	6	0.125	6.90	4.00
BD3S7	3	7	0.125	6.00	3.60
BD3S8	3	8	0.125	5.20	3.00
BD3S9	3	9	0.125	4.50	2.60
BD3S10	3	10	0.125	3.90	2.00
BD3S11	3	11	0.125	3.40	1.70
BD3S12	3	12	0.125	2.90	1.30
BD4S3	4	3	0.125	27.60	17.50
BD4S4	4	4	0.125	22.10	14.00
BD4S5	4	5	0.125	19.90	12.60
BD4S6	4	6	0.125	17.70	11.25
BD4S7	4	7	0.125	16.00	10.10
BD4S8	4	8	0.125	14.20	9.00
BD4S9	4	9	0.125	12.00	7.60
BD4S10	4	10	0.125	10.10	6.20
BD4S11	4	11	0.125	8.80	5.30
BD4S12	4	12	0.125	7.50	4.40
BD4S13	4	13	0.125	6.00	3.50
BD4S14	4	14	0.125	5.50	2.70
BD4S5	4	5	0.188	33.10	21.00
BD4S6	4	6	0.188	29.50	18.70
BD4S7	4	7	0.188	27.60	16.80
BD4S8	4	8	0.188	23.60	15.00
BD4S9	4	9	0.188	20.00	12.60
BD4S10	4	10	0.188	16.80	10.30
BD4S11	4	11	0.188	14.60	8.80
BD4S12	4	12	0.188	12.50	7.30
BD4S13	4	13	0.188	10.00	5.80
BD4S14	4	14	0.188	9.10	4.50
BD4S15	4	15	0.188	8.10	3.60
BD4S16	4	16	0.188	7.20	2.80
BD5S6	5	6	0.125	30.00	19.30
BD5S7	5	7	0.125	27.10	17.40
BD5S8	5	8	0.125	24.00	15.50
BD5S9	5	9	0.125	21.60	13.90
BD5S10	5	10	0.125	19.20	12.40
BD5S11	5	11	0.125	17.10	10.80
BD5S12	5	12	0.125	15.00	9.30
BD5S13	5	13	0.125	12.80	8.10
BD5S14	5	14	0.125	11.50	7.00
BD5S15	5	15	0.125	10.10	6.00
BD5S16	5	16	0.125	8.80	5.10
BD5S17	5	17	0.125	7.70	4.30
BD5S18	5	18	0.125	6.80	3.60
BD5S19	5	19	0.125	5.70	2.80
BD5S20	5	20	0.125	4.70	2.20
BD5S7	5	7	0.188	32.80	25.70
BD5S8	5	8	0.188	29.30	22.80
BD5S9	5	9	0.188	26.40	20.50
BD5S10	5	10	0.188	23.50	18.20
BD5S11	5	11	0.188	21.00	16.40
BD5S12	5	12	0.188	18.60	14.60
BD5S13	5	13	0.188	16.70	13.00
BD5S14	5	14	0.188	14.80	11.40
BD5S15	5	15	0.188	13.30	10.40
BD5S16	5	16	0.188	11.80	9.00
BD5S17	5	17	0.188	10.50	7.90
BD5S18	5	18	0.188	9.20	6.80
BD5S19	5	19	0.188	8.20	5.90
BD5S20	5	20	0.188	7.20	5.00

Project: _____

Fixture Type: _____ Quantity: _____

Customer: _____



illuminating
ENGINEERING SOCIETY

2 ACCESSORIES	
GF115	(15 amp GFCI receptacle outlet)
GF120	(20 amp GFCI receptacle outlet)
GFI-WPU	(20 amp GFCI receptacle with weather proof in-use cover)
BAA	(Cast Banner Arm A for 24" wide banner)
BAB	(Cast Banner Arm B for 30" wide banner)
BAC	(Cast Banner Arm C for 30" wide banner)
LR1	(Cast Ladder Rest 1)
LR3	(Cast Ladder Rest 3)
LR4	(Cast Ladder Rest 4)
LR5	(Cast Ladder Rest 5)
SIGN A	(Cast Sign A; 30" x 9", 8 letters/numbers on one line; requires Banner Arm to hang)
SIGN B	(Cast Sign B; 31" x 7", 12 letters/numbers on one line; requires Banner Arm to hang)
SIGN C	(Cast Sign C; 27" x 11", two rows of 8 letters/numbers on each line; requires Banner Arm to hang)
SIGN D	(Cast Sign D; 11" x 6 1/2", 4 letters/numbers on one line)
SIGN E	(Cast Sign E; comes with pole clamp, 24 1/2" x 6", 9 letters/numbers on one line)
FPH1	(Flag Pole Holder)
TP	(Tamper Proof Screws)
BDC	(Spun Aluminum Bolt cover)
SBDC	(Split Bolt Cover)

3 2-PIECE CLAMSHELLS			
CCS0300		CCS1302	
CCS0509		CCS1501	
CCS0701		CCS1502	
CCS0702		CCS1504	
CCS0900		CCS1509	
CCS1100		CCS1607	
CCS1201		CCS1608	
CCS1301		CCS1902	
		CCS2902	
		CCS2903	
		CCS5301	
		CCS5401	
		CCS5509	
		CCS6303	
		CCS6502	
		CCS9103	

4 FINISHES					
Standard Grade	Marine Grade		Standard Grade	Marine Grade	
40	NA	Raw Unfinished	53	100	Copper Clay
41	101	Black	56	109	Silver
42	102	Forest Green	61	106	Black Verde
43	114	Bright Red	70	118	Painted Chrome
44	107	White	71	105	Painted Copper
45	112	Bright Blue	72	108	Textured Black
46	123	Sunny Yellow	73	125	Matte Black
47	120	Aqua Green	76	121	Textured Architectural Bronze
49	NA	Galvanized	77	127	Textured White
50	111	Navy	78	124	Textured Silver
51	103	Architectural Bronze	10	130	Aspen Green
52	104	Patina Verde	11	131	Cantaloupe
12	133	Lilac	13	132	Putty

Consult factory for additional paint charges and availability

Any and all pole options to be determined by Lighting Designer or Civil Consultant. Please consult Wind Speed Map for the Front Range of Colorado